



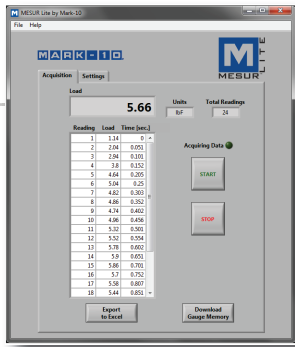
Measure wire crimp pull forces accurately and efficiently with the portable and customizable WT-205 tester. Easily apply up to 200 lbF (1,000 N) of force via an ergonomic lever. The tester's standard adjustable terminal fixture contains multiple slots for diameters up to AWG 3 (0.25 in [6.3 mm]), while the self-tightening wedge grip securely clamps the free end of the cable.

A backlit graphic LCD displays real-time force, peak force, unit of measurement, and pass/fail indicators. Green and red pass/fail indicators may also be used. A load bar on the display shows when an overload is approaching.

Transfer data to a PC or other data collector via USB, RS-232, Mitutoyo (Digimatic), or analog outputs. The WT-205 stores up to 1,000 readings and calculates statistics. Upon sample break, the tester can automatically save and output the peak force and auto-zero in preparation for the next test, increasing testing efficiency.

Use free MESUR<sup>®</sup> Lite data acquisition software to tabulate continuous or single point data. Data stored in the tester's memory can also be downloaded in bulk. One-click export to Excel allows for further data manipulation.

To accommodate a wide range of materials, optional and interchangeable alternative grips are available. Samples can be sent to Mark-10 for evaluation and recommendation prior to purchase.



MESUR<sup>®</sup> Lite data acquisition software is included with the WT-205

## Features

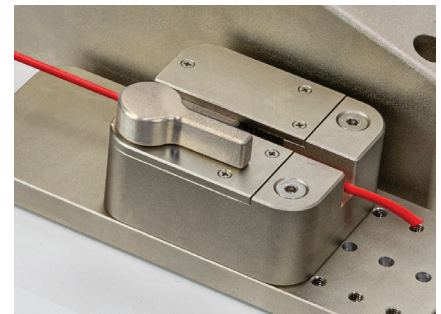
- Measures real-time and peak pull forces
- Ergonomic lever operation produces 200 lbF (1,000 N)
- Accommodates cables up to Ø0.25 in [6.3 mm]
- Selection of grips accommodate a wide range of materials
- USB, RS-232, Mitutoyo (Digimatic), and analog outputs
- Automatic output / data storage / zeroing upon sample break increases testing efficiency
- 1,000-point data memory with statistics
- Password protection prevents unauthorized changes
- Pass / fail indicators
- High-speed 7,000 Hz sampling rate accurately captures peak force values
- Configurable audio alarms and key tones
- Mounting holes for bench mounting



▲ The standard adjustable wire terminal fixture accommodates wire diameter sizes up to AWG 3 (0.25 in [6.3 mm]).



▲ An ergonomic lever easily applies force and releases the sample.



▲ The standard self-tightening wedge grip secures and pulls the loose end of the cable.

## Controls & Indicators



## Optional Functions

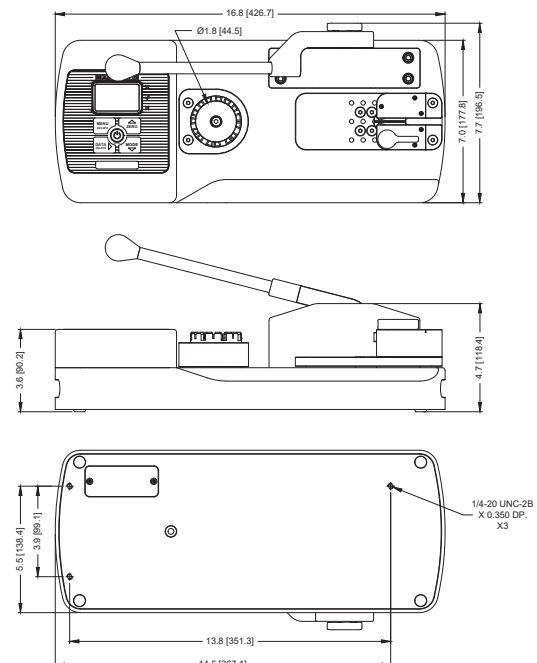
Any of these optional functions may be purchased at time of order or may be enabled in the field at a later date through a simple activation process. A complete options package is also available, including all of the listed features at a discounted price. The tester is shipped in Demo Mode, during which time all available functions are enabled for 160 hours of operation.

Feature	Part No.	Description
Profiles	WF010	Save and recall up to 500 sets of test parameters, including pass/fail limits, measurement unit, etc.
Date and time stamp	WF013	A date and time stamp is applied to each saved data point.
Complete options package	WFCOMP-205	Includes all functions listed above.

## Specifications

<b>Force capacity:</b>	200 x 0.1 lbf, 3200 x 2 ozF, 100 x 0.05 kgF, 1,000 x 0.5 N, 1 x 0.0005 kN
<b>Accuracy:</b>	±0.2% of full scale
<b>Wire diameter range:</b>	AWG30 - AWG 3 [0.01 - 0.25 in (0.3 - 6.3 mm)]
<b>Minimum sample length:</b>	2.1 in (53.3 mm), excluding termination
<b>Max. elongation:</b>	1.7 in (43.2 mm)
<b>Power:</b>	AC adapter: 100-240VAC, 50-60 Hz, 0.3 A Battery: Rechargeable 8.4V NiMH Low battery indicator appears when battery level is low, and tester powers off automatically when power reaches critical stage.
<b>Sampling rate:</b>	7,000 Hz
<b>Outputs:</b>	<b>USB / RS-232:</b> Configurable up to 115,200 baud. <b>Mitutoyo:</b> Serial BCD suitable for all Mitutoyo SPC-compatible devices. <b>Analog:</b> ±1 VDC, ±0.25% of full scale at capacity. <b>Set points:</b> Three open drain lines, 40 VDC max., 100 mA DC max.
<b>Safe overload:</b>	150% of full scale (display shows "OVER" at 110% and above)
<b>Weight:</b>	24.5 lb [11 kg]
<b>Environmental requirements:</b>	40 - 100°F, max. 96% humidity, non-condensating
<b>Warranty:</b>	3 years (see individual statement for further details)

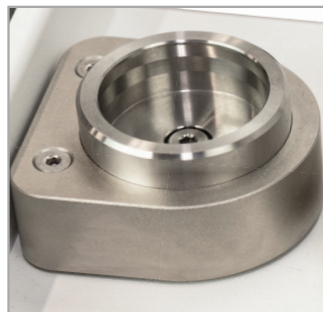
## Dimensions in [mm]



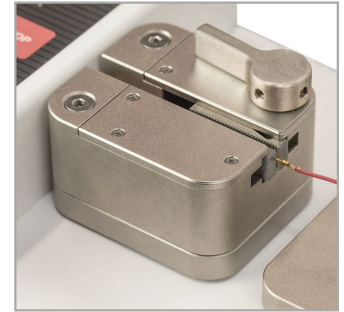
## Optional Items



**AC1135**  
**Ring terminal fixture**  
 Secures ring terminations. Pin diameter sizes from 1/8 to 3/8 in [3.2 to 9.5 mm]. Replaces the standard turret fixture.



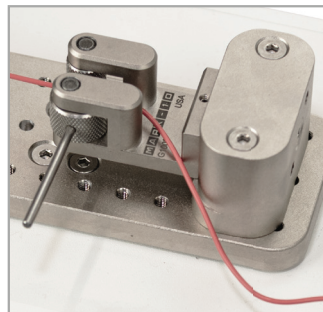
**AC1136**  
**Machinable blank terminal fixture**  
 For unique sample shapes and sizes. Replaces the standard turret fixture.



**AC1132**  
**Wedge grip assembly**  
 Self-tightening jaws effectively secure the sample. This type of grip is standard on the actuator end, but may also replace the standard turret fixture.



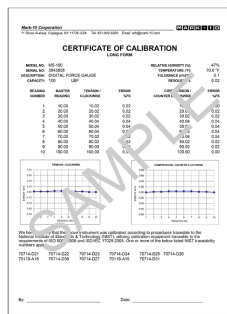
**AC1134**  
**Bollard grip assembly**  
 Secures the free end of the sample via a bollard and vise. Based on the model G1102 grip.



**AC1133**  
**Dual roller grip assembly**  
 Cam-action knurled rollers secure the free end of the wire. Replaces the standard wedge grip. Based on the model G1002 grip.



**AC1137-1**  
**Carrying case**  
 Provides a cushioned storage space for the tester and accessories.



**CERT**  
**Calibration certificate w/data**  
 Includes 10 data points (short form certificate without data is included).

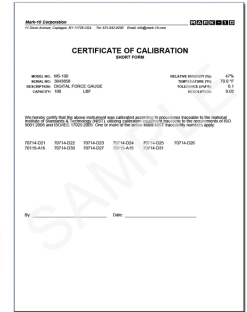


**AC1049**  
**Calibration fixture**  
 Complete set of brackets and hardware for calibration of WT-205 or WT-205M. Also compatible with legacy models WT3-201, WT3-201M, and WT3-200. Weights not available from Mark-10.

## In The Box

The tester is shipped as shown at right and includes the following accessories:

- (1) Removable lever
- (1) Turret-style terminal fixture (installed)
- (1) Wedge grip assembly (installed)
- (1) USB cable
- (1) Battery (installed)
- (1) AC adapter with 110V US prong
- (1) Certificate of calibration without data (data is optional)



## Ordering Information

Model	Description
WT-205	Wire crimp pull tester
<b>Optional Functions</b>	
WF010	Profiles
WF013	Date and time stamp
WFCOMP-205	Complete options package for WT-205
<b>Additional Items to Consider</b>	
AC1135	Ring terminal fixture
AC1136	Machinable blank terminal fixture
AC1132	Wedge grip assembly
AC1134	Bollard grip assembly
AC1133	Dual roller grip assembly
AC1137-1	Carrying case
AC1049	Calibration kit
CERT	Certificate of calibration with data

## Alternative AC Adapter Prongs



AC1120



AC1121



AC1122

All instruments include a 110V AC adapter with US prong style. Select an alternative prong adapter (if required) from the table below.

Model	Description
AC1120	Prong for AC adapter, 220V EUR
AC1121	Prong for AC adapter, 220V UK
AC1122	Prong for AC adapter, 220V AUS